

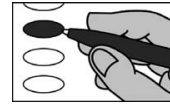
Sample Ballot  
 Alamance County, North Carolina  
 November 5, 2024

**B0003**



**BALLOT MARKING INSTRUCTIONS**

- A. With the marking device provided or a black ball point pen, completely fill in the oval to the left of each candidate or selection of your choice as shown.
- B. Where authorized, you may write in a candidate by filling in the oval and writing the name on the Write-in line.
- C. If you tear, deface or wrongly mark this ballot, return it to request a replacement.



PARTISAN ELECTIONS		NC Attorney General (You may vote for ONE)	NC Supreme Court Associate Justice Seat 6 (You may vote for ONE)
<b>President and Vice President of the United States</b> (You may vote for ONE)	<input type="radio"/> <b>Kamala D. Harris</b> <b>Tim Walz</b> <i>Democratic Party</i>	<input type="radio"/> <b>Jeff Jackson</b> <i>Democratic Party</i> <input type="radio"/> <b>Dan Bishop</b> <i>Republican Party</i>	<input type="radio"/> <b>Jefferson G. Griffin</b> <i>Republican Party</i> <input type="radio"/> <b>Allison Riggs</b> <i>Democratic Party</i>
<input type="radio"/> <b>Chase Oliver</b> <b>Mike ter Maat</b> <i>Libertarian Party</i>			
<input type="radio"/> <b>Jill Stein</b> <b>Rudolph Ware</b> <i>Green Party</i>	<input type="radio"/> <b>Bob Drach</b> <i>Libertarian Party</i> <input type="radio"/> <b>Jessica Holmes</b> <i>Democratic Party</i> <input type="radio"/> <b>Dave Boliek</b> <i>Republican Party</i>	<b>NC Auditor</b> (You may vote for ONE)	
<input type="radio"/> <b>Randall Terry</b> <b>Stephen E. Broden</b> <i>Constitution Party</i>		<b>NC Court of Appeals Judge Seat 12</b> (You may vote for ONE)	
<input type="radio"/> <b>Donald J. Trump</b> <b>JD Vance</b> <i>Republican Party</i>		<b>NC Court of Appeals Judge Seat 14</b> (You may vote for ONE)	
<input type="radio"/> <b>Cornel West</b> <b>Melina Abdullah</b> <i>Justice for All Party</i>	<b>NC Commissioner of Agriculture</b> (You may vote for ONE)		<input type="radio"/> <b>Ed Eldred</b> <i>Democratic Party</i> <input type="radio"/> <b>Valerie Zachary</b> <i>Republican Party</i>
----- Write-in	<input type="radio"/> <b>Sean Haugh</b> <i>Libertarian Party</i> <input type="radio"/> <b>Sarah Taber</b> <i>Democratic Party</i> <input type="radio"/> <b>Steve Troxler</b> <i>Republican Party</i>	<b>NC Court of Appeals Judge Seat 15</b> (You may vote for ONE)	
<b>US House of Representatives District 9</b> (You may vote for ONE)	<input type="radio"/> <b>Natasha Marcus</b> <i>Democratic Party</i> <input type="radio"/> <b>Mike Causey</b> <i>Republican Party</i>	<b>NC Commissioner of Insurance</b> (You may vote for ONE)	
<input type="radio"/> <b>Shelane Etchison</b> <i>Unaffiliated</i> <input type="radio"/> <b>Richard Hudson</b> <i>Republican Party</i> <input type="radio"/> <b>Nigel William Bristow</b> <i>Democratic Party</i>		<b>NC State Senate District 25</b> (You may vote for ONE)	
<b>NC Governor</b> (You may vote for ONE)	<input type="radio"/> <b>Luke Farley</b> <i>Republican Party</i> <input type="radio"/> <b>Braxton Winston II</b> <i>Democratic Party</i>	<b>NC Commissioner of Labor</b> (You may vote for ONE)	
<input type="radio"/> <b>Mark Robinson</b> <i>Republican Party</i> <input type="radio"/> <b>Mike Ross</b> <i>Libertarian Party</i> <input type="radio"/> <b>Vinny Smith</b> <i>Constitution Party</i> <input type="radio"/> <b>Josh Stein</b> <i>Democratic Party</i> <input type="radio"/> <b>Wayne Turner</b> <i>Green Party</i>		<b>NC House of Representatives District 63</b> (You may vote for ONE)	
<b>NC Lieutenant Governor</b> (You may vote for ONE)	<b>NC Secretary of State</b> (You may vote for ONE)		<input type="radio"/> <b>Stephen Ross</b> <i>Republican Party</i> <input type="radio"/> <b>Robin Wintringham</b> <i>Democratic Party</i>
	<input type="radio"/> <b>Rachel Hunt</b> <i>Democratic Party</i> <input type="radio"/> <b>Wayne Jones</b> <i>Constitution Party</i> <input type="radio"/> <b>Hal Weatherman</b> <i>Republican Party</i> <input type="radio"/> <b>Shannon W. Bray</b> <i>Libertarian Party</i>	<input type="radio"/> <b>Elaine Marshall</b> <i>Democratic Party</i> <input type="radio"/> <b>Chad Brown</b> <i>Republican Party</i>	
<b>NC Superintendent of Public Instruction</b> (You may vote for ONE)		<input type="radio"/> <b>Larry Brown, Jr.</b> <i>Democratic Party</i>	
<b>NC Treasurer</b> (You may vote for ONE)			
		<input type="radio"/> <b>Doug Green</b> <i>Democratic Party</i> <input type="radio"/> <b>Craig Turner</b> <i>Republican Party</i>	
<input type="radio"/> <b>Wesley Harris</b> <i>Democratic Party</i> <input type="radio"/> <b>Brad Briner</b> <i>Republican Party</i>			
		Continue voting next side →	

SAMPLE BALLOT

SAMPLE BALLOT

SAMPLE BALLOT

SAMPLE BALLOT

SAMPLE BALLOT

SAMPLE BALLOT

SAMPLE BALLOT

SAMPLE BALLOT

SAMPLE BALLOT

SAMPLE BALLOT

SAMPLE BALLOT

SAMPLE BALLOT

SAMPLE BALLOT

SAMPLE BALLOT

SAMPLE BALLOT	Alamance County, North Carolina	November 5, 2024	Ballot Style B0003	SAMPLE BALLOT
SAMPLE BALLOT	<b>NC District Court Judge District 17 Seat 4</b> (You may vote for ONE) <input type="radio"/> <b>Kathryn Whitaker (Katie) Overby</b> <i>Democratic Party</i>	<b>Alamance County Soil and Water Conservation District Supervisor</b> (You may vote for ONE) <input type="radio"/> <b>David Michael Spruill</b> <input type="radio"/> <b>Andrew Carroll</b> <input type="radio"/> _____ Write-in	Additional property taxes may be levied on property located in the City of Burlington, North Carolina in an amount sufficient to pay the principal of and interest on bonds if approved by the following ballot question. Shall the order adopted on July 16, 2024, authorizing \$21,500,000 <b>STREET AND SIDEWALK IMPROVEMENT BONDS</b> of the City of Burlington, North Carolina, plus interest, for the purpose of providing funds, together with any other available funds, to acquire, construct and equip various street and sidewalk improvements for said City, including, without limitation, street resurfacing, sidewalk improvements and streetscape improvements, and the acquisition of any related land, rights of way and equipment, and providing that additional taxes may be levied in an amount sufficient to pay the principal of and interest on said bonds be approved, in light of the following: (1) The estimated cumulative cost over the life of said bonds, using the highest interest rate charged for similar debt over the last 20 years, would be \$33,564,080, consisting of the \$21,500,000 principal amount of said bonds, plus \$12,064,080 of estimated interest. (2) The estimated amount of property tax liability increase for each one hundred thousand dollars (\$100,000) of property tax value to service the cumulative cost over the life of said bonds provided above would be \$23.00 per year. <input type="radio"/> <b>Yes</b> <input type="radio"/> <b>No</b>	SAMPLE BALLOT
SAMPLE BALLOT	<b>NC District Court Judge District 17 Seat 5</b> (You may vote for ONE) <input type="radio"/> <b>Meredith Tuck Edwards</b> <i>Republican Party</i> <input type="radio"/> <b>Natalie R. Jones</b> <i>Democratic Party</i>	<b>REFERENDA</b> <b>Constitutional Amendment</b> Constitutional amendment to provide that only a citizen of the United States who is 18 years of age and otherwise possessing the qualifications for voting shall be entitled to vote at any election in this State. <input type="radio"/> <b>For</b> <input type="radio"/> <b>Against</b>		SAMPLE BALLOT
SAMPLE BALLOT	<b>NC District Court Judge District 17 Seat 1</b> Unexpired term ending 2027 (You may vote for ONE) <input type="radio"/> <b>R. Bryan Norris, Jr.</b> <i>Democratic Party</i> <input type="radio"/> <b>Bryan Ray</b> <i>Republican Party</i>	<b>City of Burlington Parks and Recreation Bonds</b> Additional property taxes may be levied on property located in the City of Burlington, North Carolina in an amount sufficient to pay the principal of and interest on bonds if approved by the following ballot question. Shall the order adopted on July 16, 2024, authorizing \$47,000,000 <b>PARKS AND RECREATION BONDS</b> of the City of Burlington, North Carolina, plus interest, for the purpose of providing funds, together with any other available funds, to acquire, construct and equip various parks and recreational facilities for said City, including, without limitation, expansion and renovation of the Paramount Theater, improvements to the Maynard Aquatics Center and construction of a new multi-sport complex in the western part of said City, and the acquisition of any related land, rights of way and equipment, and providing that additional taxes may be levied in an amount sufficient to pay the principal of and interest on said bonds be approved, in light of the following: (1) The estimated cumulative cost over the life of said bonds, using the highest interest rate charged for similar debt over the last 20 years, would be \$73,372,640, consisting of the \$47,000,000 principal amount of said bonds, plus \$26,372,640 of estimated interest. (2) The estimated amount of property tax liability increase for each one hundred thousand dollars (\$100,000) of property tax value to service the cumulative cost over the life of said bonds provided above would be \$34.00 per year. <input type="radio"/> <b>Yes</b> <input type="radio"/> <b>No</b>	SAMPLE BALLOT	
SAMPLE BALLOT	<b>Alamance County Board of Commissioners</b> (You may vote for THREE) <input type="radio"/> <b>Carissa Graves</b> <i>Democratic Party</i> <input type="radio"/> <b>John Paisley, Jr.</b> <i>Republican Party</i> <input type="radio"/> <b>Anthony Pierce</b> <i>Democratic Party</i> <input type="radio"/> <b>Ed Priola</b> <i>Republican Party</i> <input type="radio"/> <b>Chris Smith</b> <i>Democratic Party</i> <input type="radio"/> <b>Pamela Tyler Thompson</b> <i>Republican Party</i>	<b>Alamance County Register of Deeds</b> (You may vote for ONE) <input type="radio"/> <b>David Barber</b> <i>Republican Party</i>	SAMPLE BALLOT	
SAMPLE BALLOT	<b>NONPARTISAN ELECTIONS</b> <b>Alamance-Burlington Board of Education</b> (You may vote for FOUR) <input type="radio"/> <b>Sandy Ellington-Graves</b> <input type="radio"/> <b>Tameka Harvey</b> <input type="radio"/> <b>Peter Morcombe</b> <input type="radio"/> <b>Tara Raggett</b> <input type="radio"/> <b>Seneca Rogers</b> <input type="radio"/> <b>Corrie Shepherd</b> <input type="radio"/> <b>Avery Wagoner</b> <input type="radio"/> <b>Donna Davis Westbrook</b> <input type="radio"/> _____ Write-in <input type="radio"/> _____ Write-in <input type="radio"/> _____ Write-in <input type="radio"/> _____ Write-in	<b>End of Ballot</b>	SAMPLE BALLOT	
SAMPLE BALLOT				SAMPLE BALLOT